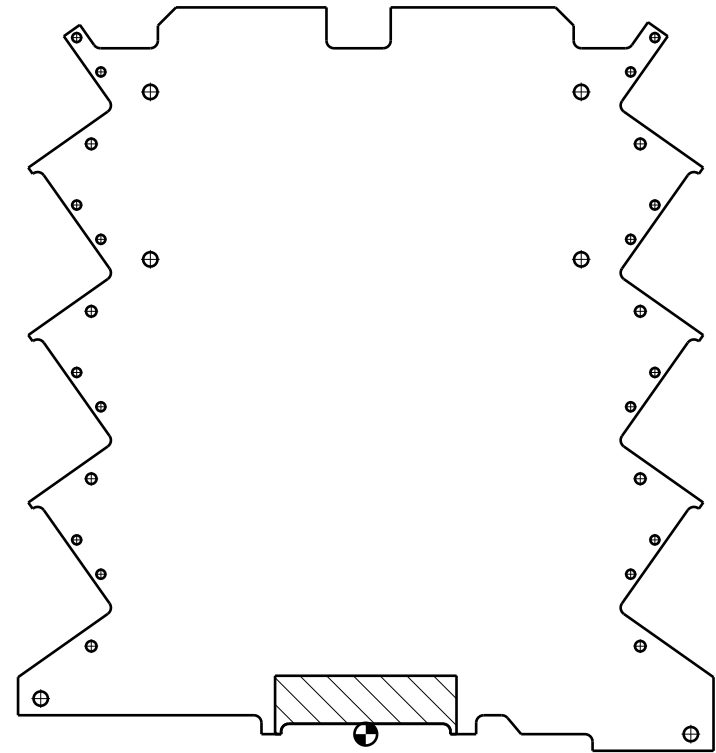
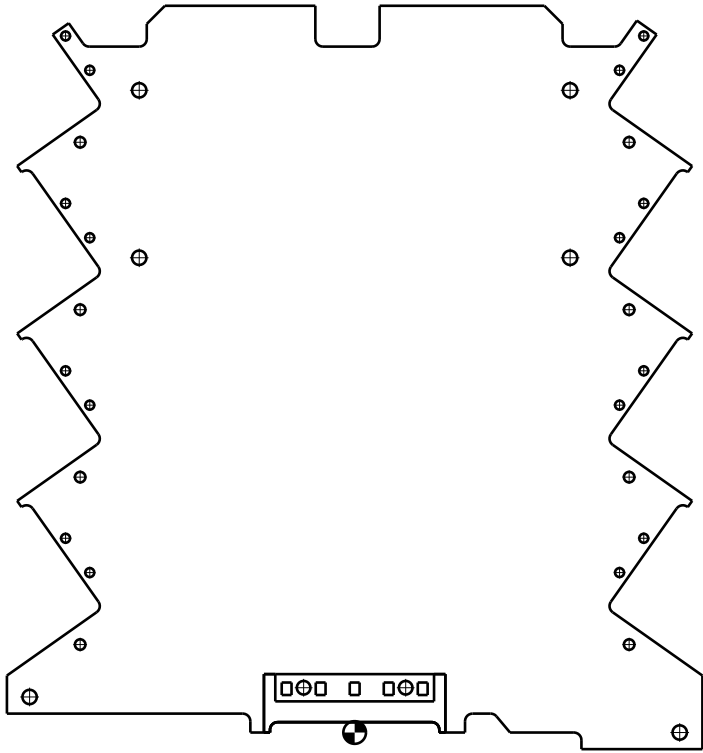
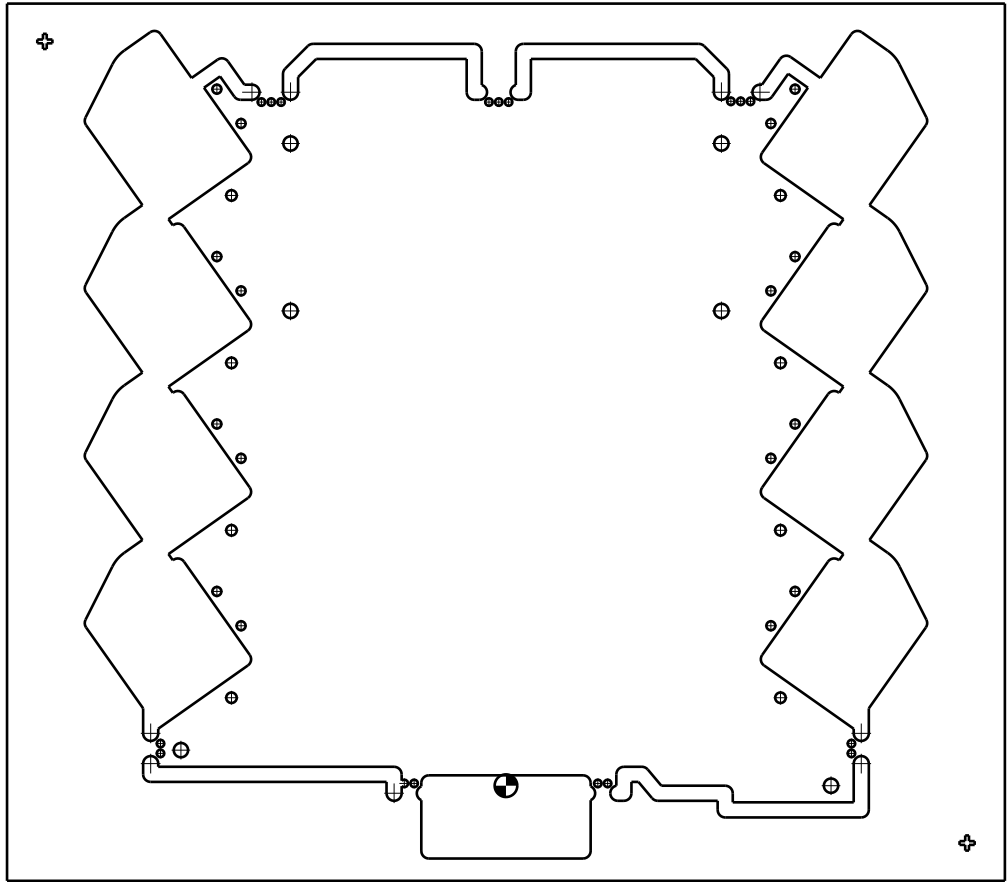


WEITERGABE SOWIE Vervielfaeltigung dieses Dokuments, Verwertung und Mitteilung seines Inhalts sind verboten, soweit nicht Ausdruecklich gestattet.
Zuwaenderungen Verpflichten zu Schadenersatz. Alle Rechte fuer den Fall der Patent-, Gebrauchs- oder Geschmacksmustereintragung vorbehalten.
THE REPRODUCTION, DISTRIBUTION AND UTILIZATION OF THIS DOCUMENT AS WELL AS THE COMMUNICATION OF ITS CONTENTS TO OTHERS WITHOUT EXPLICIT AUTHORIZATION IS PROHIBITED.
OFFENDERS WILL BE HELD LIABLE FOR THE PAYMENT OF DAMAGES. WEIDMUELLER EXCLUSIVELY RESERVES THE RIGHT TO FILE FOR PATENTS, UTILITY MODELS OR DESIGNS.

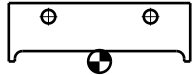
© WEIDMUELLER INTERFACE GmbH & Co.KG



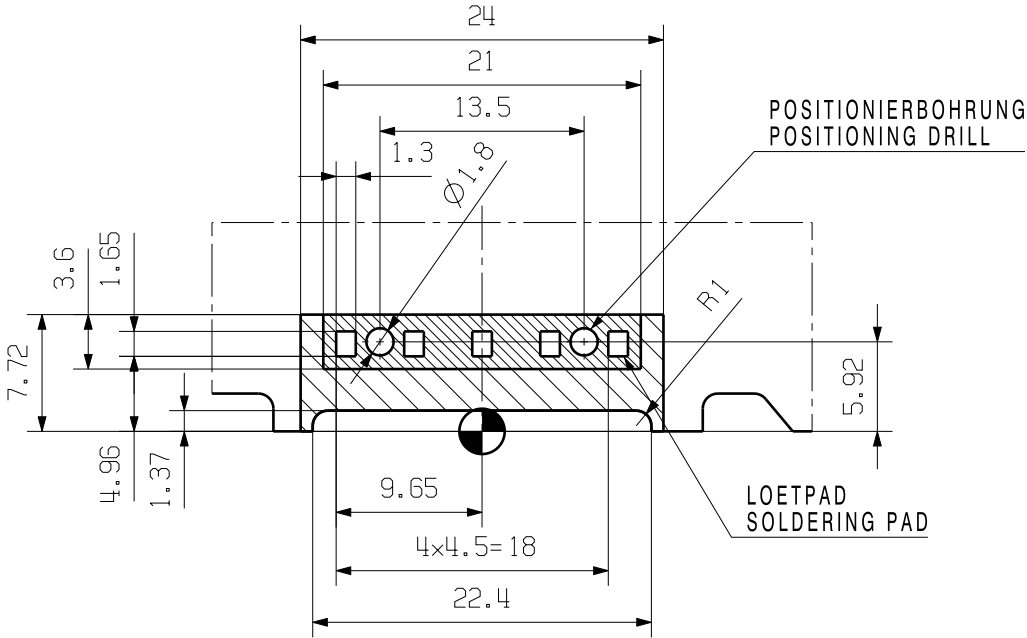
LEITERPLATTE MIT AUSSPARUNG FUEER BUS
PCB WITH CUTOUT FOR BUS



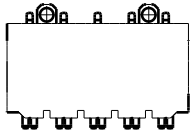
SPERRFLAECH E BUS
NON-USABLE AREA FOR BUS



DETAILANSICHT FUEER BUS-LAYOUT
DETAIL VIEW FOR BUS-LAYOUT



BAUTEILE-DEFINITION
DEFINITION OF COMPONENT



SR-SMD 4.50/05/90 ...

- SPERRFLAECH E OPTIONAL FUEER BUS
NON-USABLE AREA OPTIONAL FOR BUS
- SPERRFLAECH E, AUSGENOMMEN LEITERBAHNEN
NON-USABLE AREA, EXCEPT PCB TRACKS

MATERIAL:

PART NO.: . MAT.NO.: . CAT.NO.: .

FINISH TO WN 2 11 001 -
FINISH:ELECTROPLATED . SURFACE AREA: . mm²

GENERAL TOLERANCES: TOLERANCES TO ISO 8015
WN 2 12 010 X ISO 2768-f

56082/5
11.03.10 ENNS_E 00

Weidmüller

3 50664 04

DRAWING NO. ISSUE NO.
SHEET 04 OF 05 SHEETS

R.PART NO.: .

SCALE: 1/1

SUPERSEDES: .

	DATE	NAME
DRAWN	17.07.2009	SEIDEL_T
RESPONSIBLE		NIGGEMANN_M
CHECKED	16.02.2011	HECKERT_M
APPROVED		LANGE_ST

LP CH20M6
SPERRFLAECH E FUEER BUS
NON-USABLE AREA FOR BUSCONNECTOR

PRODUCT FILE: CH20... 5670